

C942dn

OKI®



Unlock new markets and grow your business with high-value CMYK + White printing



Print color-on-color with the C942dn from OKI®: a 5-station device with breathtaking output, stunning detail and production speed.

C942dn Highlights:

Prints with CMYK plus White toner

Prints White under CMYK in a single pass—for full color on dark media

High-density White toner for outstanding coverage on color stock

Print speed up to 50 ppm Color/Mono for CMYK; up to 45 ppm for CMYK over White¹

True 1200 x 1200 dpi resolution

High-capacity toner: up to 38,000 pages²

Small footprint—less than 5 square feet

Prints on a wide range of media, including envelopes, magnetic media, polyester, transparent film, and heavier stock (up to 360 gsm)

Handles 3" x 5" cards to 52" banners

Supports tabloid extra (12" x 18") and Super-B (13" x 19")

Duplex (2-sided printing) standard

PC and MAC® OS Postscript® print drivers—with trapping through the driver

Optional external RIP: EFI® Fiery® C9 Server or Harlequin® DirectPrint RIP

3-Year On-Site warranty³

Premium printing on demand

The C942dn from OKI is the ideal color print device for creative, opportunity-seeking print shops, design firms, and even large retailers: a fast, flexible, cost-effective, easy-to-use printer that lets you do more in house than ever before—with CMYK plus White toner in one pass.

With the C942dn, premium print jobs that used to require expensive printing equipment or outside resources are available *affordably and on demand*.

Beyond 4-color printing

The addition of White toner lets you do what most short-run print devices can't. Broaden your printed offerings by producing stunning white-on-color and, unique to the C942dn, brilliant color on dark media.

The C942dn gives you the ability to create a wide range of breathtaking output, including invitations, stationery,

brochures, packaging prototypes, point-of-sale material, window graphics, labels and more. It applies White toner under CMYK or alone on colored or translucent media to produce results that really stand out! And it can handle envelopes, clear polyester media, and stock as heavy as 360 gsm.

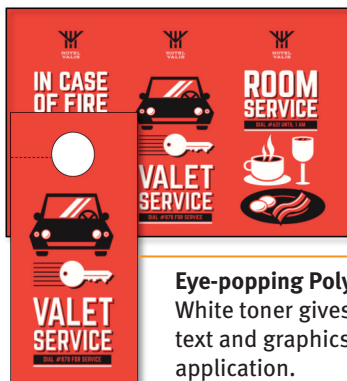
Print for profit

The C942dn lets you extend your in-house color printing capabilities from the expected to the extraordinary.

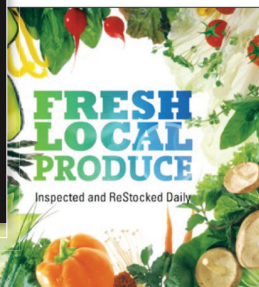
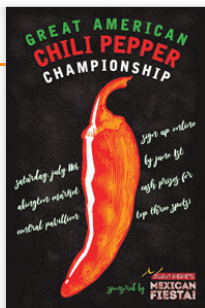
It's a new breed of print devices, perfect for short runs and, with a duty cycle rated at up to 300,000 pages per month, rugged enough for longer runs.

With its ease of use and low total cost of ownership, this affordable printing device enables you to produce premium printed products, offer new services, and grow your business and profits.

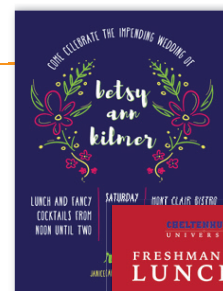
Signage and Posters – Print CMYK over White toner on clear polyester window-cling media for attention-grabbing results.



Eye-popping Polyester Door Hangers – White toner gives powerful emphasis to text and graphics, making for a unique application.



Greeting Cards & Invitations – Print color-on-color (White under CMYK) on a wide variety of dark-colored card stock for effects that really pop!



Envelopes – Print color-on-color to produce brilliant full-color images, especially impactful on dark-colored envelope media.

Unique, patented OKI® technology makes all the difference, opening up opportunities for new markets, applications and sources of revenue.

The 5-station C942dn vs. traditional color printing systems:

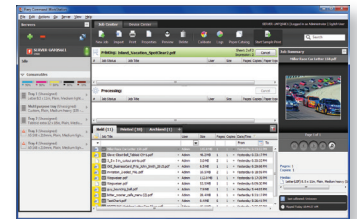
- **Color-on-Color** The C942dn applies full-color graphics to dark-colored media with stunning results, an easy and elegant solution no ordinary color printer can match—even 5-station devices from other manufacturers.
- **Media Handling** OKI® Single Pass Color printing technology and specially developed OKI firmware enable the C942dn to handle thick media (up to 360 gsm) and sizes ranging from 3" x 5" cards to 13" x 52" banners—with ease.
- **Affordable and Compact** ROI can be a business challenge with bulky, maintenance-intensive print systems. The C942dn has a lower TCO and smaller footprint than its competition, even with an optional RIP.

Optional RIP ensures color accuracy and streamlines color management

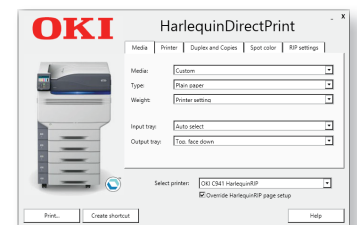
Equipped with an optional external RIP, the C942dn expedites and streamlines job processing while maintaining industry-standard color management for consistent, predictable results.

- **The optional Fiery® C9 Server from EFI®** offers fast, precise color reproduction and flexible job management. It uses the most popular Fiery features—including Command WorkStation®, Spot-On™ and Adobe® PDF Print Engine 3.0—to expand the production capabilities and improve the operational efficiencies of print shops and in-house printing services.
- **The optional Harlequin® DirectPrint RIP** is a cost-effective way to take full advantage of the C942dn's color-on-color capabilities. It's both fast and easy to use, ensuring beautiful and accurate color every time. The "HDP" uses a PDF workflow, accepting jobs from both Mac® and PC. Built-in Harlequin Dispersed Screening (HDS) and Hybrid Screening (HXM) produce sharp details and high-fidelity color transitions.

PANTONE® libraries are included in both the Fiery C9 Server and Harlequin DirectPrint RIP, to ensure accurate color matching job to job.



Fiery C9 Server



Harlequin DirectPrint RIP

Real-time status and easy maintenance

Users can get an instant read on the C942dn's status via the color LCD display, with its easy-to-read messaging and graphics. The alphanumeric keypad makes entering commands a snap. And the front-accessible compartment makes exchanging or replacing consumables quick and easy.



Color LCD display shows current status of the printer; built-in toner gauge indicates the remaining life of each toner cartridge.



Front-accessible consumables make changing or replacing toner cartridges and image drums quick and easy.



Paper capacity expandable to 2,950 sheets max. (shown with optional 2nd tray and high-capacity feeder with casters)

C942dn

Specifications

| | | |
|---------------------------------|--|--|
| Performance | Printer | 5-Color Digital LED |
| | Print Speed ¹ | Up to 50 ppm Letter, 27 ppm Tabloid Color/Mono |
| | Time to First Page ¹ | Approx. 8 seconds CMYK/Mono |
| | Duty Cycle | 300,000 pages max per month |
| Print Quality | Resolution | Up to 1200 x 1200 dpi; ProQ 1200 x 600 x 16 levels |
| Memory | RAM (Standard/Max) | 2 GB |
| | Processor | 1.2 GHz ARM CPU |
| Compatibility | Printer Languages | Adobe® PostScript® 3™, PCL® 6, PCL 5c, XPS® |
| | Connectivity | High-speed USB 2.0, 10 Base-T/100 Base-TX/1000 Base-T Ethernet |
| | Operating Systems | Windows® 8.1 support, Windows Vista®, Windows Server 2012, Windows Server 2008, Windows Server 2008 R2; Mac® OS 10.3.9 – 10.10 |
| | Network Protocols | TCP/IP, EtherTalk |
| Color Features/Solutions | Standard Features | Standard Adobe PostScript 3 controller includes trapping, ICC-based Color Management, Simulations for SWOP, ISO Coated, Japan Color; PDF Direct Print; PS Gamma Adjust; Color Correct |
| | Optional RIP | Optional external PC-based RIP: Global Graphics® Harlequin® DirectPrint RIP, Fiery® C9 Server from EFI® |
| Print Management | Solutions | Print Job Accounting; PrintSuperVision 4.0 |
| Media Handling | Media Sizes | Super-B (13" x 19"), Tabloid extra (12" x 18"), Tabloid (11" x 17"), Legal, Letter, Executive, 3" x 5" index cards, A3, A4, A5, A6, B5, C5, DL, Com 10, Monarch envelopes, and banners (up to 13" x 52") |
| | Media Weight | Trays 1/2/3 and High-Capacity Feeder: 52–320 gsm; Multi-purpose Tray: 52–360 gsm |
| | Media Capacity | Multi-purpose Tray (MPT): up to 300 sheets ⁴ |
| | | Trays 1/2/3: up to 530 sheets ⁴ |
| | | High-Capacity Feeder: up to 1,590 sheets ⁴ |
| | Max Capacity | Up to 2,950 sheets ⁴ (w/ MPT, 2 Trays and High-Capacity Feeder) |
| Media Output | Face Down: max 610 sheets; Face Up: max 300 sheets | |
| Environmental | Size (WxDxH) | 27.5" x 24.6" x 25.2" (699mm x 625mm x 640mm) |
| | Weight | 244 lb. (110.8kg) including consumables |
| | Temperature/Humidity | Operating Range: 50° – 90° F (10° – 32° C) / 20% – 80% RH; Quality Assured Range: (66° – 80° F (17° – 27° C) / 50% – 70% RH |
| | Power Consumption | Active: 1600W max. /1100W avg.; Standby: avg. 40W; PowerSave mode: 30W or less; Sleep mode: 4W or less; Auto Shutoff: 0.4W or less |
| | Noise Levels | Active: 57dBA or less; Standby: 34dBA or less; PowerSave mode: inaudible |
| | ENERGY STAR® Compliance | Yes |
| Options | Accessory (Part Number) | 530-Sheet 2nd/3rd Tray (45530702); High-Capacity Feeder w/ Caster Base (45530802); 530-Sheet Tray w/ Caster Base (45530902); Cabinet (70065701); 160 GB Hard Disk Drive (44622302); Fiery C9 Server (46299302); Harlequin DirectPrint RIP (70066201) |
| Warranty | Limited | 3-Year On-Site, 2nd Business Day Service ³ ; 5-Year Digital LED Printheads |

Ordering Information

| Product | Description | Part Number |
|---------------------------|-----------------------------------|---|
| C942dn | 5-Station Digital LED Printer | 62448401 |
| Toner: CMK | 38,000 pages ² | Cyan – 45536515; Magenta – 45536514; Black – 45536516 |
| Toner: Yellow | 24,000 pages ² | Yellow – 45536438 |
| Toner: White | 15,000 pages ⁵ | White – 45536542 |
| Image Drum: CMK | 40,000 pages ⁶ | Cyan – 45103727; Magenta – 45103726; Black – 45103728 |
| Image Drum: Yellow | 40,000 pages ⁶ | Yellow – 45103725 |
| Image Drum: White | 20,000 pages ⁶ | White – 45103764 |
| Waste Toner Box | Approx. 40,000 pages ⁶ | 45531502 |
| Fuser | Approx. 150,000 pages | 45531112 |
| Transfer Belt | Approx. 150,000 pages | 45531222 |

¹ Published performance results based on laboratory testing of letter-size sheets, simplex. Individual results may vary.

² CMK toner cartridges. Yellow toner cartridge 24,000 pages (based on ISO/IEC 19798). White toner cartridge 15,000 pages (based on 5% coverage).

³ On-site 2nd business day service available in the U.S. and Canada only.

⁴ Based on 20 lb. bond paper.

⁵ Based on 5% coverage of letter-size sheet, simplex.

⁶ Based on 3 pages per job.

Specifications are subject to change without notice.

© 2016 Oki Data Americas, Inc. OKI Reg. T.M., M.D., Oki Electric Industry Co., Ltd. 5+ Color logo T.M., Oki Data Americas, Inc. PANTONE Reg. T.M., Pantone Inc. Harlequin Reg. T.M., Global Graphics Software Ltd. EFI, Fiery, Command WorkStation Reg. T.M., SpotOn T.M., EFI, Inc. Adobe, PostScript Reg. T.M., PostScript 3 T.M., Adobe Systems, Inc. PCL Reg. T.M., Hewlett-Packard Co. Windows, Windows Vista Reg. T.M., Microsoft Corp. XPS Reg. T.M., Dell, Inc. Mac Reg. T.M., Apple Inc. ENERGY STAR Reg. T.M., US EPA.

Printed in the USA

MS16153-1016

OKI DATA AMERICAS, INC.

USA
2000 BISHOPS GATE BLVD.
MOUNT LAUREL, NJ 08054-4620
TEL: 800.OKI.DATA (800.654.3282)
FAX: 856.222.5320

CANADA
5800 HURONTARIO STREET
SUITE 1020
MISSISSAUGA, ONTARIO L5R 4B9
TEL: 905.608.5000
FAX: 905.502.3340



WWW.OKIDATA.COM

OKI®

Open up your dreams